



# Multiband Dynamics User's Guide

---

# **Multiband Dynamics Users Guide**

Metric Halo

Revision: v1.0.5

Publication date Mon Jun 24 12:11:12 EDT 2013

Copyright © 2013 Metric Halo. MH Production Bundle, ChannelStrip 3, Character, HaloVerb, Multiband Dynamics, Multiband Expander, Precision DeEsser, and TransientControl are our trademarks. All other trademarks are the property of their respective owners.

---

# Table of Contents

I. Installation .....	6
1. System Requirements .....	8
2. Installation .....	9
Macintosh .....	9
Windows .....	13
Update Notification .....	14
II. Multiband Dynamics .....	15
3. Introduction .....	17
4. Operation .....	18
Control Knob .....	18
Toggle Button .....	19
Fader .....	19
Band Solo Button .....	19
Tooltip Control .....	20
Graphs Disclosure Control .....	20
Gain Reduction Meter .....	20
Output Meter .....	21
Dynamic Transfer Function .....	21
Spectragraph Analyzer .....	22
Dynamics Knee .....	23
5. Processing .....	24
A Detailed Description .....	24
Input Conditioning .....	24
Crossover .....	24
Compressor .....	25
Introduction .....	25
Compressor Enable .....	26
Band Solo Button .....	26
Auto Gain .....	26
Threshold Control .....	26
Manual Make-Up Gain .....	26
Ratio Control .....	26
Compressor Knee Control .....	26
Attack Control .....	27
Release Control .....	28
Limiter .....	28
Limiter Enable .....	28
Input Gain .....	28
Threshold .....	28
Limiter Knee Control .....	29
III. Working with Hosts .....	30
6. Pro Tools (Mac/Win) .....	32
Plug-in Window .....	32
Key Commands .....	33
7. AU Hosts (Mac) .....	34
Logic .....	34
Plug-in Window .....	34
IV. Appendices .....	35
A. Key Commands .....	37
B. Service and Support .....	38
C. Changelog .....	39

---

## List of Figures

2.1. MH Character.pkg .....	9
2.2. Opening Dialog .....	9
2.3. License Agreement .....	10
2.4. Accepting the License Agreement .....	10
2.5. Selecting the Installation Disk .....	11
2.6. Selecting the Installation Location .....	11
2.7. Giving the Installer Permission .....	12
2.8. Installation Complete .....	12
2.9. MH Character Installer msi .....	13
2.10. Opening Dialog .....	13
2.11. Permission to Write Files .....	14
2.12. Installation Complete .....	14
3.1. Multiband Dynamics's User Interface .....	17
4.1. Swept Knob .....	18
4.2. Plus/Minus Knob .....	18
4.3. Toggle Button (Off) .....	19
4.4. Toggle Button (On) .....	19
4.5. Output Gain .....	19
4.6. Band Solo Button (Disabled) .....	19
4.7. Band Solo Button (Enabled) .....	19
4.8. Tooltip Control .....	20
4.9. Graph Disclosure Button .....	20
4.10. Gain Reduction Meter .....	20
4.11. Output Meter .....	21
4.12. Dynamic Transfer Function .....	21
4.13. Spectragraph Display .....	22
4.14. Dynamics Knee .....	23
5.1. Multiband Dynamics Signal Flow .....	24
5.2. Crossover Controls .....	24
5.3. Dynamic Transfer Function .....	25
5.4. Compressor (Low Frequency Shown) .....	25
5.5. Knee Control at 0 .....	27
5.6. Knee Control at 1 .....	27
5.7. Knee Control at -0.5 .....	27
5.8. Limiter .....	28
6.1. Pro Tools Plug-in Window .....	32
6.2. Compare Button .....	32
6.3. Automation Window, Showing Character's Parameters .....	33
7.1. Logic's Plug-in Window .....	34

---

## List of Tables

6.1. Pro Tools Key Commands .....	33
A.1. Tooltip Control .....	37
A.2. Control Knob Modifiers .....	37
A.3. Numeric Field Modifiers .....	37
A.4. Meters .....	37
A.5. EQ Transfer Functions .....	37
A.6. Pro Tools Key Commands .....	37

---

# Part I. Installation

---

---

## Table of Contents

1. System Requirements .....	8
2. Installation .....	9
Macintosh .....	9
Windows .....	13
Update Notification .....	14

---

# 1. System Requirements

- *Pro Tools™ (Macintosh)*: Pro Tools 10 or higher running on a Macintosh computer. This software supports Native and AAX DSP operation.
- *Pro Tools™ (Windows)*: Pro Tools 10 or higher running on a Windows computer. This software supports Native and AAX DSP operation.
- *Native*: Any Macintosh DAW that supports Audio Unit plug-ins.
  
- An iLok copy protection key and account. Please note that one Production Bundle license authorizes the software on any platform.



---

## 2. Installation

Screenshots to illustrate the installation process are from the Production Bundle, but the process is the same for individual plug-ins.

### Macintosh

*Please note* – The following graphics show installation on an OS 10.7 system; the process may be slightly different in other versions of the OS, but the basic concepts are the same. Small details such as file sizes shown may vary with subsequent releases.

- Double-click the “MH Character.pkg” application



**Figure 2.1: MH Character.pkg**

- The installer dialog will appear:



**Figure 2.2: Opening Dialog**

- Click “Continue”...
- Now you will see the Metric Halo License Agreement:



Figure 2.3: License Agreement

- After you have read it, click “Continue”...
- Next click “Agree” to accept the License Agreement:

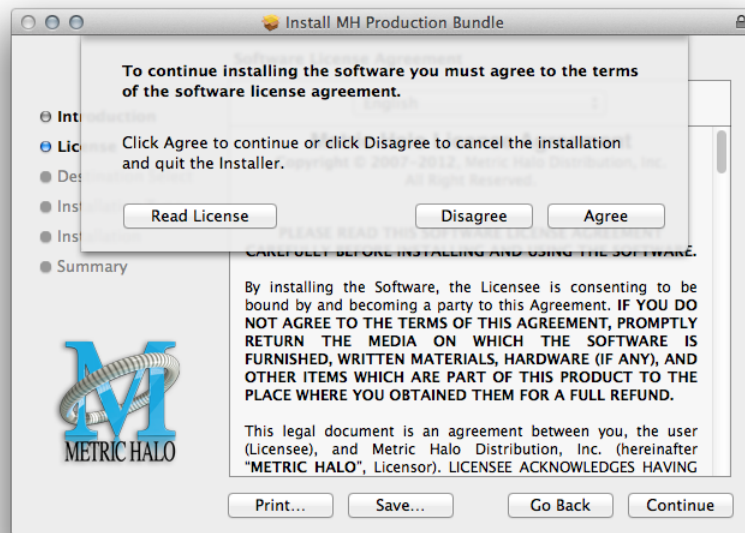
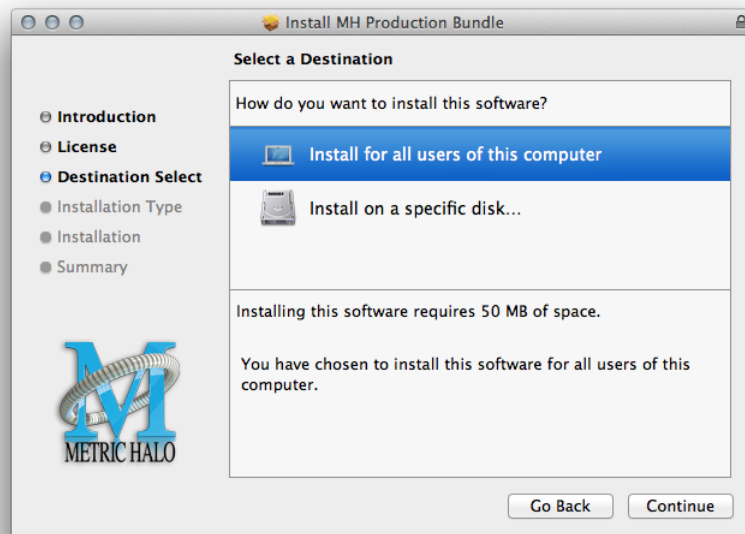


Figure 2.4: Accepting the License Agreement

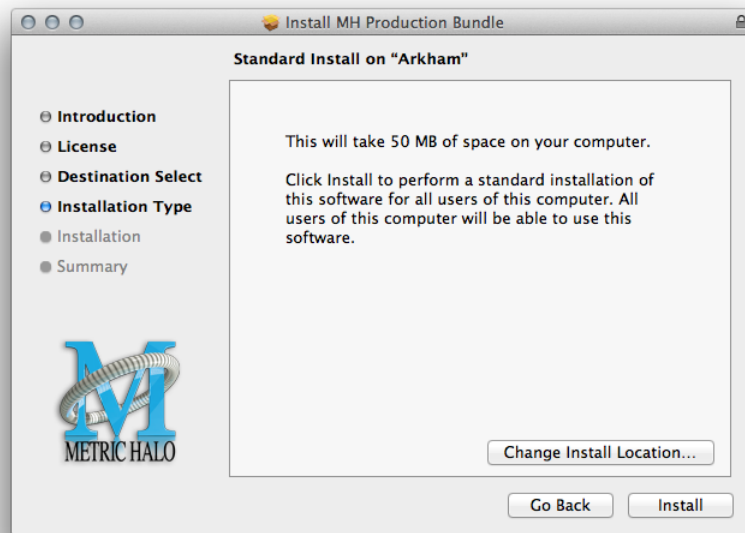
- Now select the disk you would like the software to be installed to:



**Figure 2.5: Selecting the Installation Disk**

We recommend installing for all users unless you have a specific reason not to. Select the drive and click “Continue”...

- Next, you have the option to select the location on the disk you would like the software to be installed to:



**Figure 2.6: Selecting the Installation Location**

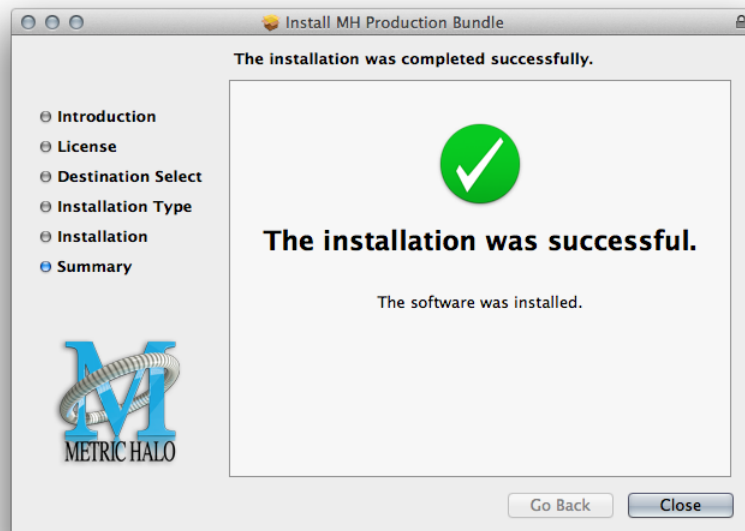
We recommend that you use the standard installation location unless you have a specific reason not to. The standard locations are:

- Plug-ins – (drivename)/Library/Application Support/Avid/Audio/Plug-Ins/MH Plug-Ins
  - Presets – (drivename)/Library/Application Support/Digidesign/Plug-In Settings
- Click “Install”...
- You must now enter the name and password you use to log in to your computer, to give the Installer permission to write the software:



**Figure 2.7: Giving the Installer Permission**

- Enter your credentials and click “Install Software”...
- Once the installer has finished, you'll see this dialog:



**Figure 2.8: Installation Complete**

- If you do *not* see the “Installation Successful” message, contact [MH Support](#).
- The final step is to go to <http://www.ilok.com/> and install the software license to your iLok key.

That’s it! Enjoy using Character!

## Windows

There are two versions of each Windows installer:

- Installers that end in *.msi* are intended for 32 bit versions of Windows, and install the 32 bit version of the plug-in(s).
- Installers that end in *\_x64.msi* are intended for 64 bit versions of Windows, and install the 32 bit and 64 bit versions of the plug-in(s). This allows you to run Pro Tools 10 or 11 on a 64 bit machine.

These installation instructions refer to the 32 bit installer, but the process is the same for 64 bit installations.

*Please note* – The following graphics show installation on an Windows 7 system; the process may be slightly different in other versions of the OS, but the basic concepts are the same. Small details such as file sizes shown may vary with subsequent releases.

- Double-click the “MHCharacterInstaller.msi” application



**Figure 2.9: MH Character Installer msi**

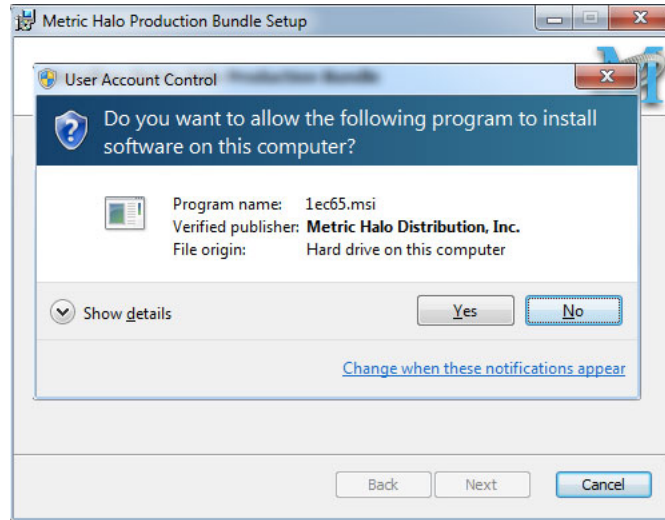
- The installer dialog will appear:



**Figure 2.10: Opening Dialog**

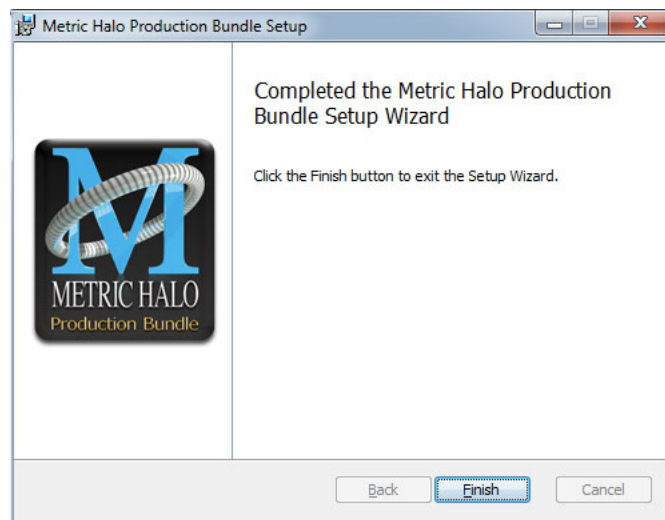
After you have read the Metric Halo License Agreement, click the “I accept the terms of the License Agreement” checkbox and click “Install”

- Windows will ask for permission to write the files:



**Figure 2.11: Permission to Write Files**

- Click "Yes" to begin the installation.
- Once the files have been written you will see the completion dialog:



**Figure 2.12: Installation Complete**

Click "Finish" to close the installer.

- If you do *not* see the "Installation Successful" message, contact [MH Support](#).
- The final step is to go to <http://www.ilok.com/> and install the software license to your iLok key.

That's it! Enjoy using the Metric Halo Production Bundle!

### Update Notification

Multiband Dynamics will automatically check to see if there's a newer version available (if your computer is connected to the internet). If so, the version number in the UI will turn into an update notice. Click on the notice and a browser window will open to our download page, where you may download the newest installer.

---

# **Part II. Multiband Dynamics**

---

---

## Table of Contents

3. Introduction .....	17
4. Operation .....	18
Control Knob .....	18
Toggle Button .....	19
Fader .....	19
Band Solo Button .....	19
Tooltip Control .....	20
Graphs Disclosure Control .....	20
Gain Reduction Meter .....	20
Output Meter .....	21
Dynamic Transfer Function .....	21
Spectragraph Analyzer .....	22
Dynamics Knee .....	23
5. Processing .....	24
A Detailed Description .....	24
Input Conditioning .....	24
Crossover .....	24
Compressor .....	25
Introduction .....	25
Compressor Enable .....	26
Band Solo Button .....	26
Auto Gain .....	26
Threshold Control .....	26
Manual Make-Up Gain .....	26
Ratio Control .....	26
Compressor Knee Control .....	26
Attack Control .....	27
Release Control .....	28
Limiter .....	28
Limiter Enable .....	28
Input Gain .....	28
Threshold .....	28
Limiter Knee Control .....	29



# 3. Introduction

Multiband Dynamics is a plug-in for digital audio workstations which provides frequency based dynamic processing.

Features include:

- Three-way crossover
- Three independent channels of compression
- Limiter
- Disclosable graphic displays
- Dynamic transfer function display
- SpectraFoo™ spectrum analysis



Figure 3.1: Multiband Dynamics's User Interface

---

## 4. Operation

As with most plug-ins, Multiband Dynamics provides many copies of controls that are all operated in a similar manner. The Multiband Dynamics user interface uses a few different control elements to control all of the processing. These elements are:

### Control Knob

Control Knobs are used to control the value of various continuous parameters of a process. Examples of these types of parameters include: Attack Time, Release Time, Threshold, etc. There are two styles of encoders:



Figure 4.1: Swept Knob

The rings around these encoders sweep from a minimum to maximum value, normally from left to right. The one exception is the threshold controls, which sweep from right to left.



Figure 4.2: Plus/Minus Knob

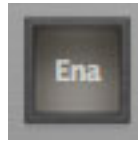
The rings around these encoders start at 12 o'clock and sweep to either side. These knobs are used for gain control, where straight up is no gain change, turning to the left cuts the signal and turning to the right boosts it.

You can change the value of each knob in a number of different ways. Click and drag the knob to change the value continuously. Dragging up or to the right will increase the value, while dragging down or to the left will decrease the value. If you hold down the Mac ⌘ (Command) key or Windows **Control** key when you click, you will be able to adjust the value with finer precision. If you hold the Mac ⌥ (Option) key or Windows **Alt** key when you click, the knob will reset to its default value. You may also double-click a knob to reset it.

Click on the number (readout) of the knob to display a text entry field that allows you to type in a number directly. The pop-up will remain active until you dismiss it by clicking somewhere else or hitting the **return**, **enter**, **tab**, Mac ⌘. (Command + .), Windows **Alt** key or **ESC** keys. Hit **return** or **enter** to confirm the value and dismiss the pop-up. Hit the **tab** key to confirm the value and display an entry field for the next control. ⌥-**tab** (Shift + tab) will display the entry field for the previous control). Hit the Mac ⌘. (Command + .), Windows **Control**. (Control + .) or **ESC** (Escape) to dismiss the pop-up and cancel the change.

When you enter a number into the pop-up entry, you can use a couple of abbreviations: “k” multiplies the number by 1000 and “m” divides the number by 1000. So if you want to enter 16,500 Hz you can just type 16.5k.

## Toggle Button



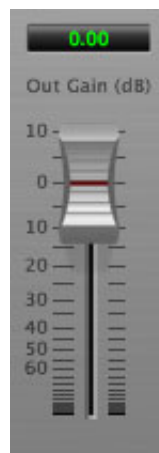
**Figure 4.3: Toggle Button (Off)**



**Figure 4.4: Toggle Button (On)**

Toggle buttons are simple on/off switches. They light up when they are on and are dark when they are off. You toggle the state of the button by clicking on it. These buttons are used to enable compressor sections and the limiter, and to select auto gain.

## Fader



**Figure 4.5: Output Gain**

The fader is unique in that only one fader is used in the interface for Multiband Dynamics. It works in much the same fashion as the control knobs. Instead of dragging up/right or down/left to change the value, you directly drag the fader knob. The other “tricks” described for the knobs also work with the fader. The fader is used to control the master output gain of the plug-in.

## Band Solo Button



**Figure 4.6: Band Solo Button (Disabled)**



**Figure 4.7: Band Solo Button (Enabled)**

The band solo button allows you to listen to an individual crossover band or combination of them. This allows you to hear the effect of each compressor section independently.

## Tooltip Control



**Figure 4.8: Tooltip Control**

This button toggles the tooltip display. When enabled, tooltips will be shown when the mouse hovers over a control. When the tooltip display is disabled, you may still see tooltips by holding down the ? key and hovering over a control.

## Graphs Disclosure Control



**Figure 4.9: Graph Disclosure Button**

The Graphs disclosure control allows you to show and hide Multiband Dynamics' display graphs. This allows you to maximize screen real-estate while still providing details on the processing when they are needed. Click on this control to toggle the visibility of the graphs. Multiband Dynamics will automatically make the plug-in window smaller when you hide the graphs.

Multiband Dynamics also uses a number of standard visual representations to give you feedback about what is happening within the processor. These elements are:

## Gain Reduction Meter



**Figure 4.10: Gain Reduction Meter**

The gain reduction meter, which has an orange bar and grows down from 0 dB, shows the amount of attenuation being applied by its associated dynamics processor at any given time. If you right-click (Mac/Win) or Mac ^ (Control) click on the meter, you may set the scale of the gain reduction meter to any of the following values:

- 54 dB
- 24 db
- 12 db
- 6 db
- 3 db

## Output Meter

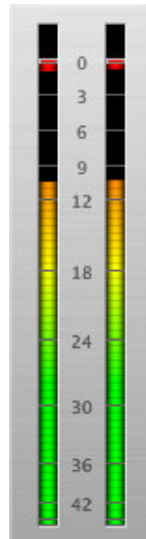


Figure 4.11: Output Meter

For the main output stage of Multiband Dynamics we have provided meters driven with SpectraFoo™ metering technology. These meters show, in addition to the peak metering provided for the input stages, RMS level and VU level. The peak level is represented by the floating colored bar, the RMS level by the solid colored bar and the VU level by the overlaid gray bar. Both the Peak and RMS level are represented with fast PPM ballistics. The VU meter shows IEEE standard 300 ms RMS average level. When Multiband Dynamics is on a mono insert there will be a single meter. When Multiband Dynamics is running in stereo mode the left meter shows the left channel output level and the right meter shows the right channel output level. The output section clip lights activate if there is an over in the output stage or in any of the processing section input stages. It is reset by clicking on the meter; Mac  $\mathcal{N}$  (Option)-click or Windows **Alt**-click to reset the clip lights on all the meters.

## Dynamic Transfer Function



Figure 4.12: Dynamic Transfer Function

The dynamic transfer function is a combination of a visual representation of how the plug-in is processing the signal and an intuitive controller for the crossover filter bands.

The horizontal axis provides frequency calibration in Hertz (Hz), while the vertical axis provides level calibration in decibels (dB). The heavy white line indicates the relative change in level at each frequency that is created by the combined effects of all of the active bands in the plug-in. Each crossover point (low to mid and mid to high) is represented by a colored dot in the transfer function. You may drag the dots to adjust the crossover points.

If you right-click (Mac/Win) or Mac ^ (Control) click on the transfer function, you will see a menu to set the vertical dB scale for the display. The values are:

- $\pm 3$  dB
- $\pm 6$  dB
- $\pm 12$  dB
- $\pm 24$  dB
- $\pm 36$  dB

### Spectrgraph Analyzer

Clicking the SpectraFoo™ logo in the upper right hand corner of the transfer function will activate the spectrgraph, showing the realtime frequency analysis of your signal:

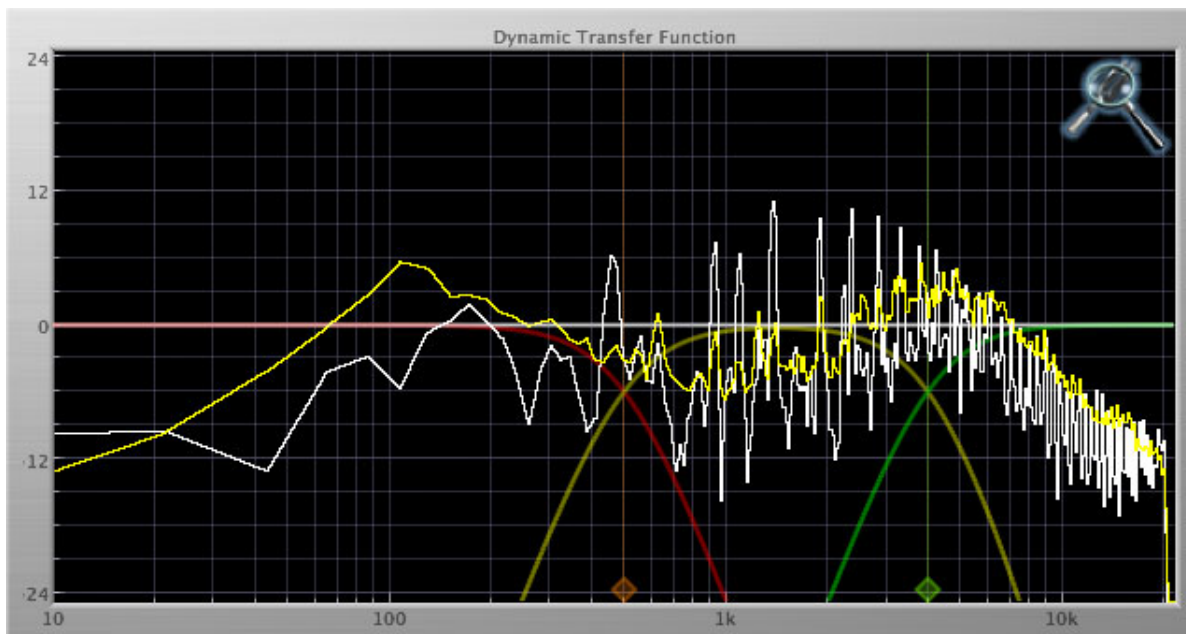


Figure 4.13: Spectrgraph Display

The traces are:

- White: Left channel instantaneous display
- Red: Right channel instantaneous display
- Yellow: Left channel average display
- Blue: Right channel average display

The *instantaneous* trace updates in real-time, allowing you to see the immediate peak level of your audio. The *average* trace displays the level as averaged over a short period, giving you a more general view.

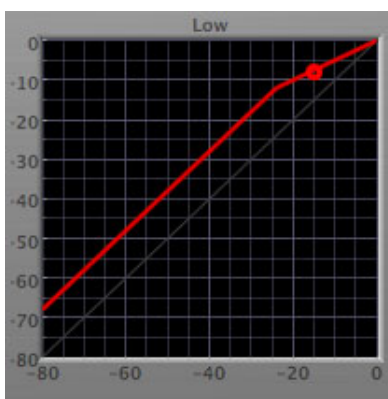
The spectrograph analyses the signal post-output gain, allowing you to see the effects of the processors. To disable the spectrograph entirely, click the active 'Foo icon.

If you right-click (Mac/Win) or Mac ^ (Control) click on the transfer function, you will see a menu to set options for the spectrograph:

- Show Instantaneous Trace: Toggles whether the spectrograph shows the instant response of your audio.
- Show Average Trace: Toggles whether the spectrograph shows the averaged response of your audio.
- Show Left Channel: Toggles the left channel spectrograph display.
- Show Right Channel: Toggles the right channel spectrograph display.

These settings are stored for each transfer function window separately, and for each instance of Multiband Dynamics.

## Dynamics Knee



**Figure 4.14: Dynamics Knee**

Multiband Dynamics contains a Dynamics Knee diagram for each compressor processing section. The diagram provides feedback on the response of the associated dynamics processor. Both the horizontal and vertical axes are calibrated in dBFS. The horizontal axis corresponds to the input level and the vertical axis represents the output level. The heavy line shows the dynamic of the associated processing block. This means that if you sent in a sine wave at a given input level, the output level would be equal to the level shown on the graph. When the processor is working with real dynamic signals, the graph is a good approximation of the response when the attack is fast and the release is slow.

In most cases, however, the dynamic response of the processor will not match its static response. In order to represent this, we have included a "bouncing ball" meter for both the gate and the compressor. This metering is shown as a red circle that is overlaid on the knee diagram. The red circle is placed so its horizontal position is equal to the instantaneous input level and its vertical level is equal to the instantaneous output level. Examining this meter while you are adjusting the dynamics controls will provide you with a great deal of information about how the processor is operating and how the controls interact.

# 5. Processing

## A Detailed Description

In this chapter we'll discuss what each processing block does and how the controls work.

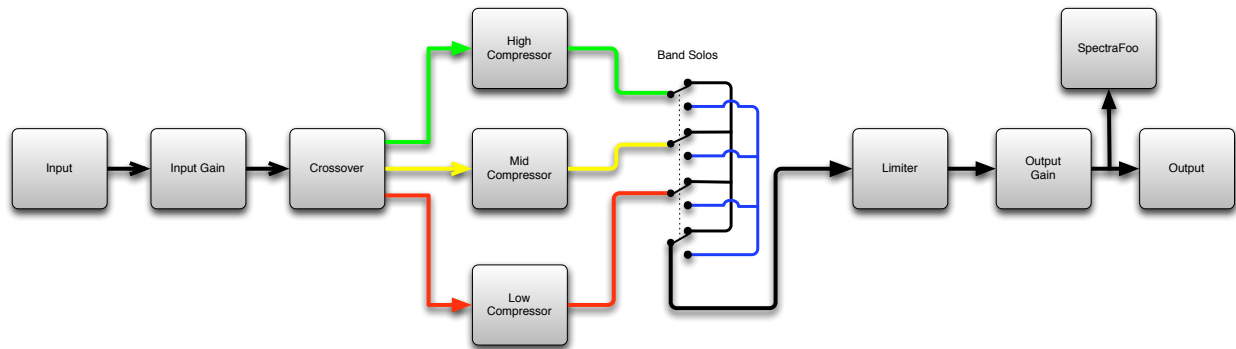


Figure 5.1: Multiband Dynamics Signal Flow

The block diagram above illustrates the overall structure of the processing system provided by Multiband Dynamics. The diagram does not indicate the various metering blocks.

Now let's examine the various processing blocks indicated in the diagram.

### Input Conditioning

After the signal is routed to Multiband Dynamics it runs through an input gain block that provides input gain of up to +30 dB. You can use this gain to condition signals that are low in level.

This input gain may also be used to pad out signals by up to -30 dB. While you may find this attenuation useful to just bring down the level through the strip simply and quickly, you must realize that this gain is applied after the signal reaches Multiband Dynamics and will not pad out any clipping that occurs in the A/D converters or in a plug-in that is inserted before Multiband Dynamics.

The input gain is controlled by the "In Gain" knob.

### Crossover

The crossover separates the audio input into low, mid and high bands; each of these bands is then fed through a compressor section. There are two controls to set the crossover points:

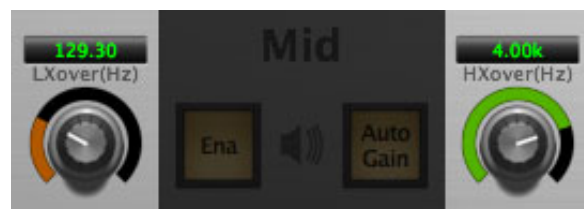


Figure 5.2: Crossover Controls

The control marked "LXover" sets the frequency of the low to mid crossover, and the control marked "HXover" sets the frequency of the mid to high crossover.



You may also adjust the crossover points in the dynamic transfer function:



Figure 5.3: Dynamic Transfer Function

Simply grab one of the handles at the bottom of the display and drag to desired frequency. The orange handle adjusts the low/mid crossover point and the green handle adjusts the mid/high crossover point.

## Compressor



Figure 5.4: Compressor (Low Frequency Shown)

## Introduction

Multiband Dynamics contains three separate compressors, one for each crossover band. They are identical, so we will only describe their operation once.

### **Compressor Enable**

When this button is off, the compressor section will not change the signal.

### **Band Solo Button**

This button (the speaker icon next to the Enable button) allows you to monitor the selected compressor's output. This will allow you to listen one or more bands of compression in isolation. When you are done listening to the soloed band(s), click this button again to hear Multiband Dynamics' normal output.

### **Auto Gain**

When the "Auto Gain" button is enabled the compressor automatically adjusts the makeup gain in the compressor output stage so that if the manual "O Gain" knob is set to 0 dB the static gain reduction for a 0 dB input level will be about 7 dB. This number was chosen because it works well with the default settings of the "Attack" and "Release" knobs to provide enough pad to not clip fast transients. The "O Gain" knob will apply additional trim to the internal automatic gain. If the threshold is set very low (e.g. -60 dB) and auto gain is enabled, you will not be able to add very much manual gain (only about 1 – 2 dB) even though the readout on the knob will go up to + 30 dB. This is an internal limitation of the compressor.

### **Threshold Control**

The "Thresh" knob controls the level at which the compressor begins to reduce the gain applied to the signal. When the detector level is below the threshold level, no gain reduction is applied. As the detector level increases above the threshold level, the gain is reduced as indicated by the knee diagram associated with the compressor. The compressor knee is soft. The ratio increases as the difference between the detector level and the threshold increases.

The compressor threshold level is also indicated by the red bar above the gate input meter. You can adjust the threshold level using this indicator as well as by using the "Thresh" knob.

### **Manual Make-Up Gain**

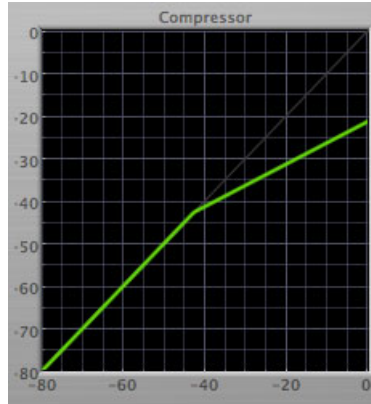
The "Gain" knob allows you to manually adjust the makeup gain applied to the signal after the gain reduction applied by the compressor by  $\pm 30$  db. If the Auto Gain switch is off, this is the amount of makeup gain applied. If the Auto Gain switch is on, then this parameter is a trim added to the internally computed makeup gain. The makeup gain is enabled and disabled along with the rest of the compressor.

### **Ratio Control**

The "Ratio" knob controls the 'terminal' ratio used to compute the gain reduction of the compressor. When the ratio associated with the soft knee hits the ratio specified by the ratio knob, the knee 'hardens' and remains at the same constant ratio. If you set the ratio to 1000:1 the compressor will have a soft knee for all input levels and thresholds. This makes the compressor work like a classic all tube limiter/compressor.

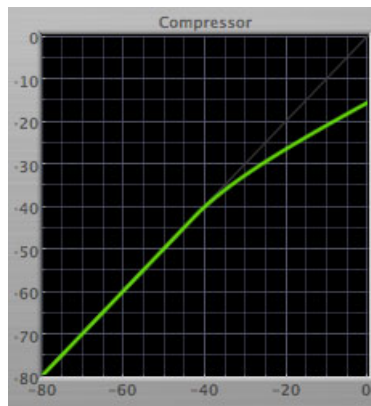
### **Compressor Knee Control**

The "Knee" knob allows you to adjust shape of the compressor transfer function. When the Knee control is set to 0, the transfer function of the compressor is a classic "hard-knee" in which the compressor applies no gain reduction when the detector is below the threshold, and the gain is reduced by the ratio when the detector level is above the threshold.



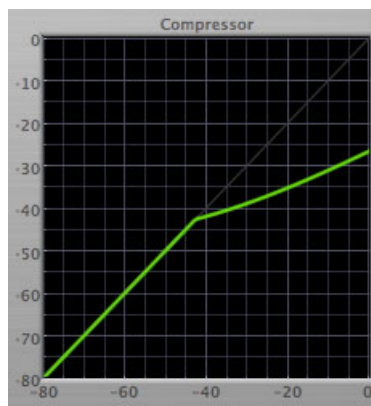
**Figure 5.5: Knee Control at 0**

When you increase the Knee parameter from 0 to 1 the knee of the transfer function gradually softens until the compressor functions as a soft-knee compressor when the Knee parameter is 1.



**Figure 5.6: Knee Control at 1**

You can also adjust the Knee parameter to negative values, which has the effect introducing a “kink” in the compressor transfer function at the threshold. This can yield useful results on percussive material.



**Figure 5.7: Knee Control at -0.5**

### Attack Control

The “Attack” knob allows you to adjust how quickly the gain reduction is increases when the detector level goes above the threshold level. This control is calibrated in milliseconds and values range from 0 to 500 ms. The compressor has an 8 sample look-ahead buffer that allows it to have an “instant attack” when you set the

attack time to 0. Fast attack times will control the transients of impulsive sounds. Use longer attack times to let the transients through but control the sustains.

### Release Control

The “Release” knob controls the release time of the compressor. This knob is calibrated in milliseconds and can range from 5 ms to 5 sec. The release time controls how quickly the gain reduction returns to zero after the detector drops below the threshold value. For settings below 40 ms or so the compressor releases pretty abruptly and may introduce unwanted artifacts into your audio, depending on the signal. In addition, be careful making the release time faster than the attack time.

### Limiter



Figure 5.8: Limiter

The final processing block in the Multiband Dynamics is a limiter. The limiter can be used to ensure that the final output of ChannelStrip doesn't distort due to extreme EQ boosts. This also makes it very easy to use Multiband Dynamics as a mastering plug-in on your final mix bus.

#### Limiter Enable

When this button is off, the limiter section will not change the signal.

#### Input Gain

This control allows you to attenuate or boost the signal level going in to the limiter's input by  $\pm 30$  dB.

#### Threshold

The “Thresh” knob controls the level at which the limiter begins to reduce the gain applied to the signal. When the detector level is below the threshold level, no gain reduction is applied. As the detector level increases

toward the threshold level, the gain is reduced as determined by the knee control. The limiter knee is soft. The ratio increases as the difference between the detector level and the threshold increases.

### **Limiter Knee Control**

The “Knee” knob allows you to adjust shape of the limiter gain reduction. When the Knee control is set to 0, the transfer function of the limiter is a classic “hard-knee” in which the compressor applies no gain reduction when the detector is below the threshold, and the gain is reduced by the ratio when the detector level is at the threshold.

---

# **Part III. Working with Hosts**

---

---

## Table of Contents

6. Pro Tools (Mac/Win) .....	32
Plug-in Window .....	32
Key Commands .....	33
7. AU Hosts (Mac) .....	34
Logic .....	34
Plug-in Window .....	34

---

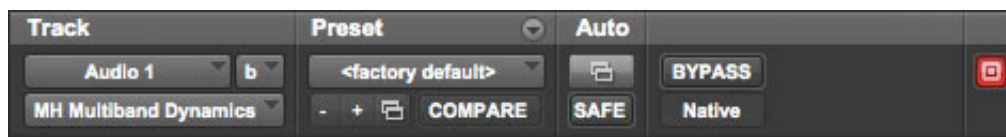
## 6. Pro Tools (Mac/Win)

Your Pro Tools software provides a standard interface for controlling various aspects of AAX plug-ins. While you should refer to your Pro Tools documentation for a complete description, we will summarize the most important points here.

If you wish to use a plug-in on multiple channels in your mix, you should Mac  $\text{⌘}$  (Option) or Windows **Alt** insert the plug-in on the desired channels and ensure that the plug-in is inserted on the same insert point on every channel (e.g. ensure that the plug-in is on insert “a” for every channel). This will allow you to take advantage of a number of time saving features provided by Pro Tools.

### Plug-in Window

The illustration below shows the standard Pro Tools plug-in window.



**Figure 6.1: Pro Tools Plug-in Window**

If you have inserted your plug-in(s) as we suggested above you can click on the channel name pop-up in the upper left hand corner of the window (labeled “Audio 1” above) to switch from channel to channel.

The next pop-up in the window (labeled “b” above) allows you to switch to another insert on the same channel. You would use this to switch to another plug-in on the same channel.

The bypass button allows you to bypass the effects of the plug-in.

The Pro Tools editor/librarian button (the small, downward pointing triangle) provides access to a pop-up menu that allow you to manage presets and libraries of settings for the plug-in. Use this menu to save libraries or open groups of libraries. See your Pro Tools documentation for more information.

The preset library pop-up menu (labeled “factory default” above) shows the active preset name (in italics if the current settings do not match the library). Click this pop-up to select from the available presets.

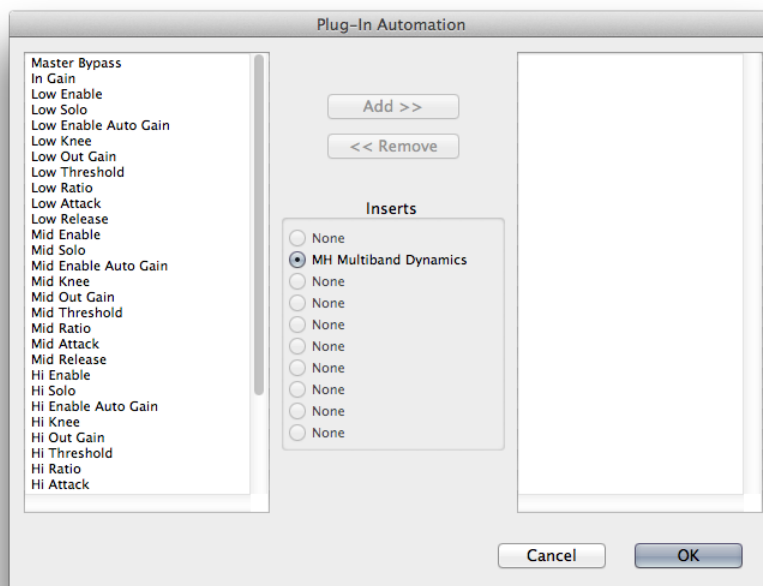
The “Compare” button indicates when the controls have changed for the current preset settings. Click this button to toggle between your current settings and the preset settings.



**Figure 6.2: Compare Button**

Clicking the “Automation” button causes Pro Tools to display the plug-in automation configuration dialog box:





**Figure 6.3: Automation Window, Showing Character's Parameters**

This dialog box allows you to enable any or all of the processing parameters for automation. When a parameter is enabled for automation you will be able to record and play-back automated parameter changes directly from your Pro Tools session. If the channel that the plug-in is inserted on has automation enabled Character will highlight the controls associated with the automated parameters:

- Off: No color
- Read: Green
- Touch, Latch, Write: Red
- Controlled via control surface: Blue

### Key Commands

The following key commands are used to when clicking on controls:

**Table 6.1. Pro Tools Key Commands**

Command	Mac Key Sequence	Windows Key Sequence
Display Automation Dialog	⌘-click (Option + Command)-click	Alt + Control-click
Show Automation Breakpoint	⌘-click (Control + Command)-click	Control + Windows-click
Set Parameter to Default Value	⌘ (Option)-click or double-click	Alt-click or double-click

---

## 7. AU Hosts (Mac)

The Production Bundle is compatible with any Core Audio compatible host. Support for features like sidechains differ between hosts; please check your host's documentation for more info. As an example, we'll look at using the Production Bundle in Logic.

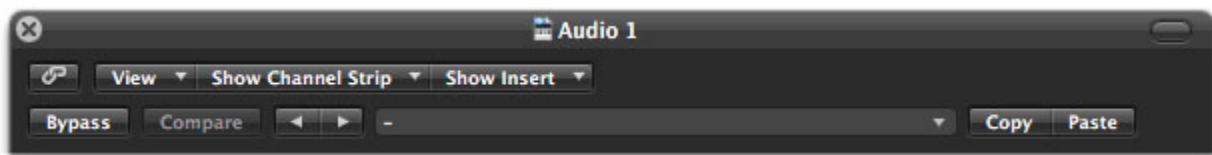
### Logic

Logic provides a standard interface for controlling various aspects of AU plug-ins. While you should refer to your Logic documentation for a complete description, we will summarize the most important points here.

If you wish to use a plug-in on multiple channels in your mix, you should click and drag the selection marquee over the desired channels in the Mixer, and insert the plug-in on any one of them; this will insert the plug-in at the same insert point on every channel.

### Plug-in Window

The illustration below shows the standard Logic plug-in window.



**Figure 7.1: Logic's Plug-in Window**

If you have inserted the plug-in as we suggested above you can click on the “Show Channel Strip” pop-up to switch between instances of the plug-in on different channels.

The “Show Insert” pop-up allows you to switch to another insert on the same channel. You would use this to switch to another plug-in on the same channel.

When the Link button (the button with the chain icon) is on, a single plug-in window is used to display all plug-ins. Turn this off if you would like to have multiple plug-in windows open at once.

The View button is used to toggle between the generic AU user interface for the plug-in and the standard view provided by Metric Halo.

The Bypass button allows you to bypass the effects of the plug-in. The effects of all the processing sections within the plug-in are removed from the audio chain when the plug-in is bypassed.

The Compare button allows you to toggle between the current settings and the settings as they were before the last parameter change. By using the Compare button you may “A/B” changes in settings.

The left/right arrows move backward and forward between presets.

The Logic preset menu (the pop-up menu with the small downward pointing triangle next to the left/right arrows) allows you to manage presets and libraries of settings for the plug-ins. Use this menu to save libraries or open groups of libraries. See your Logic documentation for more information.

The Copy and Paste buttons allow you to copy settings from one instance of a plug-in and paste them into the same plug-in on other channels without creating a preset.

The sidechain input pop-up menu allows you to select from any mono input or bus in your system and feed it to the internal sidechain bus within plug-ins that have sidechain support. You then use the sidechain routing buttons within the plug-in UI to assign the sidechain bus to the dynamics detectors. This menu is only present when a sidechain-enabled plug-in is viewed.

---

# Part IV. Appendices

---

---

## Table of Contents

A. Key Commands .....	37
B. Service and Support .....	38
C. Changelog .....	39

# A. Key Commands

There are several key commands used as modifiers combined with mouse actions:

**Table A.1. Tooltip Control**

Command	Mac Key Sequence	Windows Key Sequence
Show tooltips	Hold ? down	Hold ? down

**Table A.2. Control Knob Modifiers**

Command	Mac Key Sequence	Windows Key Sequence
Fine control	⌘ (Command)-click and drag	Control-click and drag
Reset to default value	⌥ (Option)-click or double-click	Alt-click or double-click

**Table A.3. Numeric Field Modifiers**

Command	Mac Key Sequence	Windows Key Sequence
Confirm & dismiss numeric pop-up	return, enter	return, enter
Confirm & move to next entry	tab	tab
Confirm & move to previous entry	⇧-tab (Shift + tab)	⇧-tab (Shift + tab)
Dismiss numeric pop-up & cancel change	⌘. (Command + .), ESC	Control. (Control + .), ESC

**Table A.4. Meters**

Command	Mac Key Sequence	Windows Key Sequence
Reset Clip	⌥ (Option)-click the meter	Alt-click the meter

**Table A.5. EQ Transfer Functions**

Command	Mac Key Sequence	Windows Key Sequence
Toggle band enable	⌘ (Command)-click or double-click frequency dot	Control-click or double-click frequency dot
Adjust bandwidth (click then drag)	⌥ (Option)-click frequency dot	Alt-click frequency dot
Change filter type	⌘⌥ (Command + Option)-click frequency dot	Control+Alt-click frequency dot
Access EQ TF settings	^ (Control) or right-click graph	Right-click graph

**Table A.6. Pro Tools Key Commands**

Command	Mac Key Sequence	Windows Key Sequence
Display Automation Dialog	⌥⌘ (Option + Command)-click	Alt + Control-click
Show Automation Breakpoint	^⌘ (Control + Command)-click	Control + Windows-click
Set Parameter to Default Value	⌥ (Option)-click or double-click	Alt-click or double-click

---

## B. Service and Support

Metric Halo takes great pride in the reputation for customer service and support that we have built. If you have any problems, questions, or suggestions please get in touch with us at:

- <http://mhsecure.com/support>
- [support@mhsecure.com](mailto:support@mhsecure.com)
- (727) 725-9555

Please keep us informed about your successes and projects. We love to hear from you!

---

# C. Changelog

Please note that this changelog incorporates changes for all plug-ins across all supported formats.

## 1.0.5:

- Fix alignment issue with some UI elements in ChannelStrip
- [AU] Fix issue in some hosts where parameter updates may be lost
- Fix for potential crash on deinstantiation in Multiband Plugins
- [AU] Fix for crash in some hosts (specifically FCPX) due to initialization on a thread
- [AU] Fix meter reset for MultibandCompressor
- [AU] Fix meter reset for MultibandExpander
- [AU] Fix potential crash in HaloVerb
- [AU] Fix meter reset for Character
- Fix meter allocation for MultibandExpander
- Fix analysis buffer allocation for MultibandExpander
- Fix analysis buffer allocation for MultibandCompressor
- Fix analysis buffer allocation for De-Esser
- [AAX] Add support for PT11 and 64-bit build
- [AAX-Win] Implement full optimization for host code (decreases CPU usage)
- [AAX-Win] Implement 64-bit Installers
- Sign Binaries for PT 10.3.x / PT 11
- Fix auto-suffixing of parameter readouts to deal with negative numbers
- [TransientControl] Fix (extend) range of the sustain parameter
- Fix locking for threaded plotter of crossover functions to avoid potential race condition and crash
- [Mac] Fix problem with signing 32-bit binaries (led to corrupted PT 10.3.x plugins)
- Fix Gain Reduction meters for PT reported meters (so that PT11 and control surfaces render them properly)

## 1.0.4:

- Fixed potential problem with licensing code when plugin scanner opens and closes plugin very quickly
- Moved drawing of HaloVerb impulse response onto background thread for responsiveness
- Moved drawing of Multiband dynamic EQ response onto background thread for responsiveness
- Added caching for background image of plugin window to reduce CPU used for drawing static image
- Fixed incorrect interpretation of wet/dry parameter when computing HaloVerb impulse response display
- Optimized computing HaloVerb impulse response display
- Optimized redraw of EQ response curve
- Fixed problem with incorrectly showing that preset was changed (when it wasn't) via Compare button
- Deferred redraw of UI until host sends parameter changed message -- fixes PT UI pauses when changing certain parameters
- Fixed problem with parameter notification that caused recording of automation for ChannelStrip to not function
- Added work-around to fix problems with multi-parameter touch automation recording in Logic (work-around Logic bug)

## 1.0.3:

- Soft Interpolation of band Bypass in ChannelStrip EQ
- Fix slight transparency on some controls
- Fixed problem with tool-tip tracking
- Fixed problem with phantom mouse clicks after dragging beyond UI boundary
- Fixed problem with silent output from CS2/CS3 on some hosts with disconnected sidechain input
- Fixed problem with compressor gain state on instantiation
- ChannelStrip: removed recall of Bypass from preset state (to match standard PT behavior)
- Add support for Mac OS 10.5
- Add support to cancel text entry with ⌘. (Command + .) [Control. (Control + .) on Win]
- Fixed interpolation to support bit-clean bypass
- Fixed noise problem with LF high-pass filters
- Fix problem with tooltips appearing even if window is covered by another window or is hidden
- [Added a preference to control auto-enable of bands to the Transfer Function popup menu in Channel-Strip 3](#)
- Fixed interpolation in ChannelStrip:
  - Stereo EQ bands
  - Compressor/Limiter threshold
  - Stereo Gate
- Fixed interpolation in Multiband Dynamics:
  - Compressor/Limiter threshold
- [Knee control in ChannelStrip 3 is hidden when not in "MIO" character mode](#)
- [Added version number reporting and update notification](#)
- Initial release for Windows AAX
- Initial release for Macintosh AU
- Initial release of ChannelStrip 3 for GarageBand

#### 1.0.2:

- Fixed issue with grunge when DSP is filled with MH Precision De-esser
- Further optimized CS3, Precision De-esser, and MH MultibandDynamics, leading to an increase in instance counts
- Fixed bit-cleanliness on bypassed CS3 blocks -- so now CS3 with phase invert nulls with unprocessed audio

#### 1.0.1:

- Substantial optimization of the processing code, especially for HDX
- Accurate Cycle Counts for HDX
- Enhanced control surface page table layouts
- Fix for some corner case bugs that apparently can cause a DSP crash on heavily loaded systems
- Additional interpolation of various parameters in the plugins to provide glitch free parameter changes
- Fixed a conflict between CoreGraphics and DAE that can lead to DAE errors (DSP + Native), CPU Spiking or CPU overloads (Native)
- Fixed a filter stability issue for high session sample rates
- Fixed an issue where the average trace in the analyzer view can get stuck
- Reduce the size on disk and in memory of the plugins
- Fixed some missing control surface metering support and clip detection
- Fixed some small graphic anomalies
- Fix for detector for classic compressor in CS3 when Side-Chain filter is enabled



- Signed installer for Mountain Lion compatibility

1.0: Initial release for Macintosh AAX